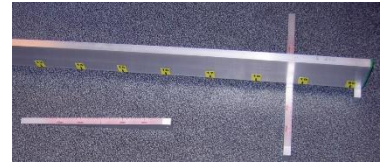


TM-1 Handheld Profilometer



TM-1 is a handheld profilometers that can easily be used by a single operator. It includes an aluminum bar and a wedge for measuring both dips and bumps on a surface.

For transport the wedge is placed inside the bar. The bar is conveniently marked as a ruler with decimeter (dm) scale to help determine the precise location of the dip or bump from a reference point. The wedge is used to measure the height of the actual dip or bump.

The surface roughness measuring method corresponds to the building standard of Finland RT 14-10373.

TM-1 Features and Benefits

- Lightweight
- Compact
- Bar and wedge

Parameter	Units	Value
Bar		
Scale length	m	2
Unit	dm	1
Dimensions	mm	2050 x 120 x 18
Weight	g	1275
Wedge		
Measuring range	mm	+/- 10
Unit	mm	1
Dimensions	mm	360 x 36 x 16
Weight	g	285